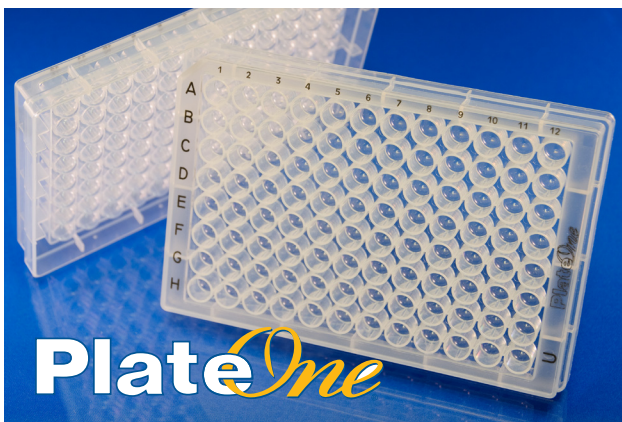


STARLAB focus

STARLAB Customer Information

Complete!



PlateOne® Microplates complete the range of STARLAB's Polypropylene plates. Four new plate styles offer excellent sample recovery, high clarity and easy well identification with the highly visible solvent-resistant alpha-numeric matrix.

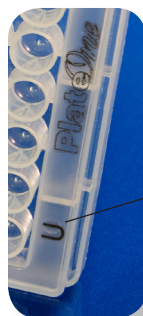
All PlateOne® plates have SBS standard for compatibility with your automated equipment. Certified free of detectable RNase, DNase and DNA. Sterile plates are also certified non-pyrogenic.

Features

- Virgin polypropylene with reduced sample binding compared to Polystyrene
- High chemical resistance
- Chimney wells (96 Well) prevent cross contamination
- Highly visible alphanumeric matrix
- Even moulded surface for excellent sealing
- SBS footprint
- Certified

Ordering Information PlateOne® 96-Well Microplates		
Cat. No.	Description	Pack Size
Flat Bottom (F) Plates, max. Working Volume 370 µl		
S1837-9600	96-Well Microplate, Round Wells with Flat Bottoms,	4 x 20 Plates
S1837-9610	96-Well Microplate, Round Wells with Flat Bottoms (Sterile)	4 x 20 Plates
Round Bottom (U) Plates, max. Working Volume 320 µl		
S1830-9600	96-Well Microplate, Round Wells with Round Bottoms	4 x 20 Plates
S1830-9610	96-Well Microplate, Round Wells with Round Bottoms (Sterile)	4 x 20 Plates
Conical Bottom (V) Plates, max. Working Volume 320 µl		
S1833-9600	96-Well Microplate, Round Wells with Conical Bottoms	4 x 20 Plates
S1833-9610	96-Well Microplate, Round Wells with Conical Bottoms (Sterile)	4 x 20 Plates
<i>Plate Dimensions (L x W x H): 127.8 mm x 85.5 mm x 14.4 mm</i>		
<i>See catalogue or website for ordering information of Plate Seals</i>		

Ordering Information PlateOne® 384-Well Microplates		
Cat. No.	Description	Pack Size
Flat Bottom (F) Plates, max. Working Volume 140 µl		
S1843-8400	384-Well Microplate, Square Wells with Flat Bottoms	4 x 20 Plates
S1843-8410	384-Well Microplate, Square Wells with Flat Bottoms (Sterile)	4 x 20 Plates
Conical Bottom (V) Plates, max. Working Volume 125 µl		
S1823-8400	384-Well Microplate, Square Wells with Conical Bottoms	4 x 20 Plates
S1823-8410	384-Well Microplate, Square Wells with Conical Bottoms (Sterile)	4 x 20 Plates
<i>Plate Dimensions (L x W x H): 127.8 mm x 85.5 mm x 14.4 mm</i>		
<i>See catalogue or website for ordering information of Plate Seals</i>		



Well-bottom shape indicator code for easy plate identification





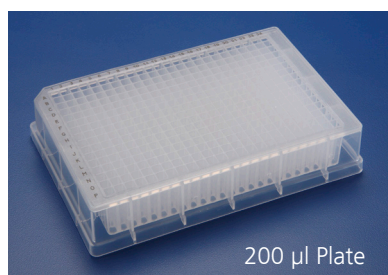
PlateOne® - Deepwell Plates, with contrasting, easy to read and solvent resistant alphanumeric matrix. Raised well rims reduce cross contamination and provide good contact for sealing and foils. The conical well bottoms are slightly rounded to allow full sample retrieval.

All plates conform to the SBS standard and are certified free of detectable RNase, DNase and DNA. Sterile plates are also certified non-pyrogenic.

PlateOne® Deepwell is available in 96 and 384 well options, and in a variety of convenient packaging styles. Sterile plates are individually wrapped with easy-open tear strips.

Ordering Information PlateOne® 96 Deepwell Plates

Cat. No.	Description	Pack Size
0.5 ml Deepwell Plates (Plate Height 27.1 mm)		
S1896-5000	0.5 ml 96 Deepwell Plate, Round Wells with Round Bottoms (Bulk)	32 Plates
S1896-5800	0.5 ml 96 Deepwell Plate, Round Wells with Round Bottoms	4 x 8 Plates
S1896-5110	0.5 ml 96 Deepwell Plate, Round Wells with Round Bottoms (Sterile, individually Wrapped)	4 x 8 Plates
1.0 ml Deepwell Plates (Plate Height 44.1 mm)		
S1896-1000	1.0 ml 96 Deepwell Plate, Round Wells with Round Bottoms (Bulk)	20 Plates
S1896-1800	1.0 ml 96 Deepwell Plate, Round Wells with Round Bottoms	4 x 5 Plates
S1896-1110	1.0 ml 96 Deepwell Plate, Round Wells with Round Bottoms (Sterile, individually Wrapped)	4 x 5 Plates
2.0 ml Deepwell Plates (Plate Height 44.1 mm)		
S1896-2000	2.0 ml 96 Deepwell Plate, Square Wells with Conical Bottoms (Bulk)	20 Plates
S1896-2800	2.0 ml 96 Deepwell Plate, Square Wells with Conical Bottoms	4 x 5 Plates
S1896-2110	2.0 ml 96 Deepwell Plate, Square Wells with Conical Bottoms (Sterile, individually Wrapped)	4 x 5 Plates
<i>Plate Footprint (L x W): 127.8 mm x 85.5 mm</i> <i>See catalogue or website for ordering information of Plate Seals</i>		



Ordering Information PlateOne® 384 Deepwell Plates

Cat. No.	Description	Pack Size
200 µl Deepwell Plates		
S1884-2000	200 µl 384 Deepwell Plate, Square Wells with Conical Bottoms (Bulk)	40 Plates
S1884-2400	200 µl 384 Deepwell Plate, Square Wells with Conical Bottoms	4 x 10 Plates
S1884-2410	200 µl 384 Deepwell Plate, Square Wells with Conical Bottoms (Sterile, individually Wrapped)	4 x 10 Plates
<i>Plate Dimensions (L x W x H): 127.8 mm x 85.5 mm x 25.1 mm</i> <i>See catalogue or website for ordering information of Plate Seals</i>		

STARLAB GmbH
Kurt-Fischer-Straße 22
D-22926 Ahrensburg
Germany

STARLAB (UK), Ltd
4 Tanners Drive
Milton Keynes MK14 5NA
United Kingdom

STARLAB-FRANCE
38 Avenue Henri Barbusse
92220 Bagneux
France

STARLAB Srl
Via Corelli 36/5
20134 Milano
Italy

STARLAB Scientific India Private Ltd.
First Floor, Old No: 322, New No: 24
Thambu Chetty Street
Chennai - 600001, India

T: +49 (0)4102 60440
F: +49 (0)4102 604420
info@starlab.de

T: +44 (0)1908 283800
F: +44 (0)1908 283802
infoline@starlab.co.uk

T: +33 (0)1 45 3652 80
F: +33 (0)1 45 3604 86
info@starlab-france.com

T: +39 02 7020 1040
F: +39 02 7020 1033
info@starlabitalia.it

T: +91 (0) 44 42130702 / 703
F: +91 (0) 44 42130701
info@starlab.co.in

www.starlabgroup.com

